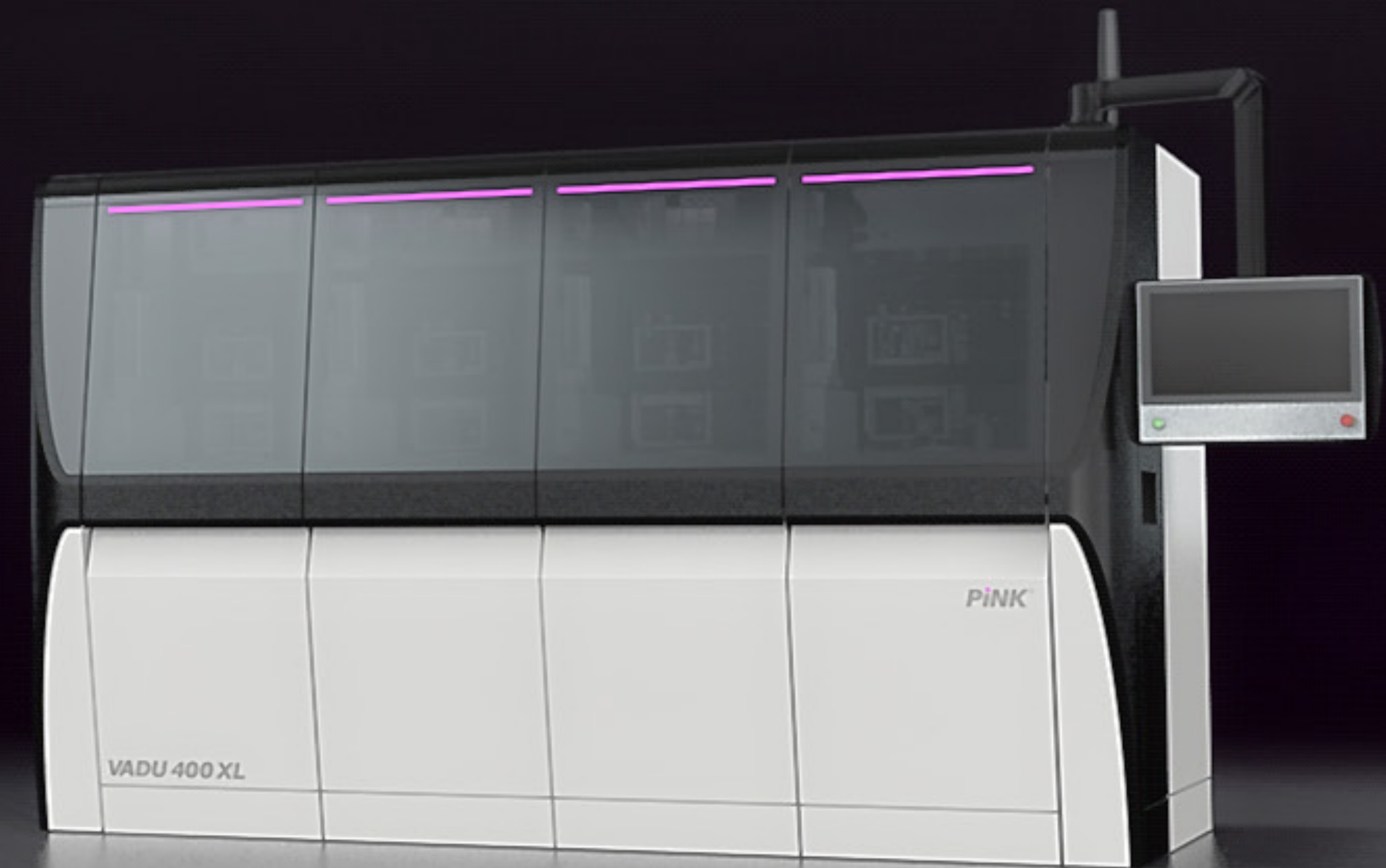


**PiNK<sup>®</sup>**

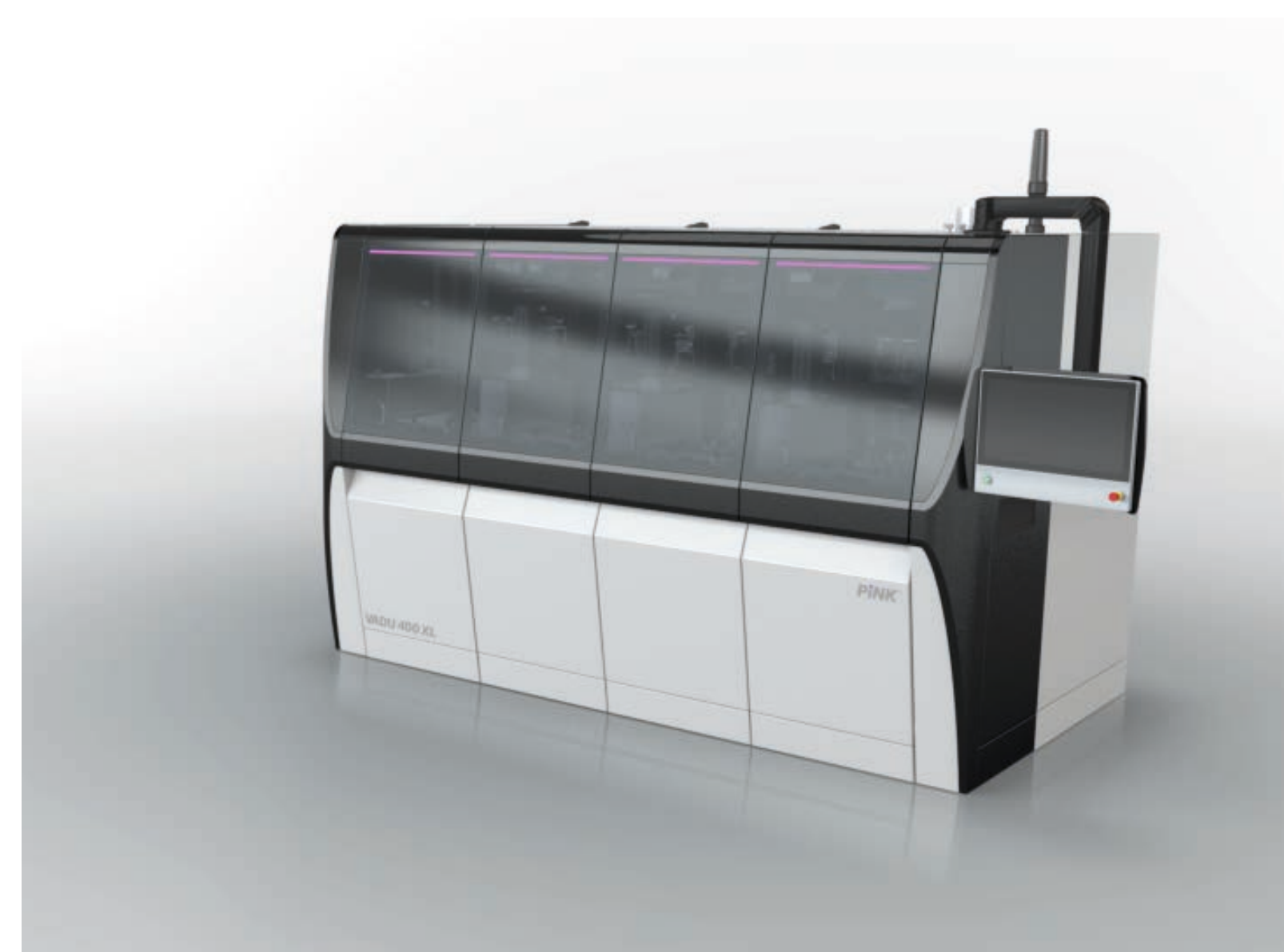
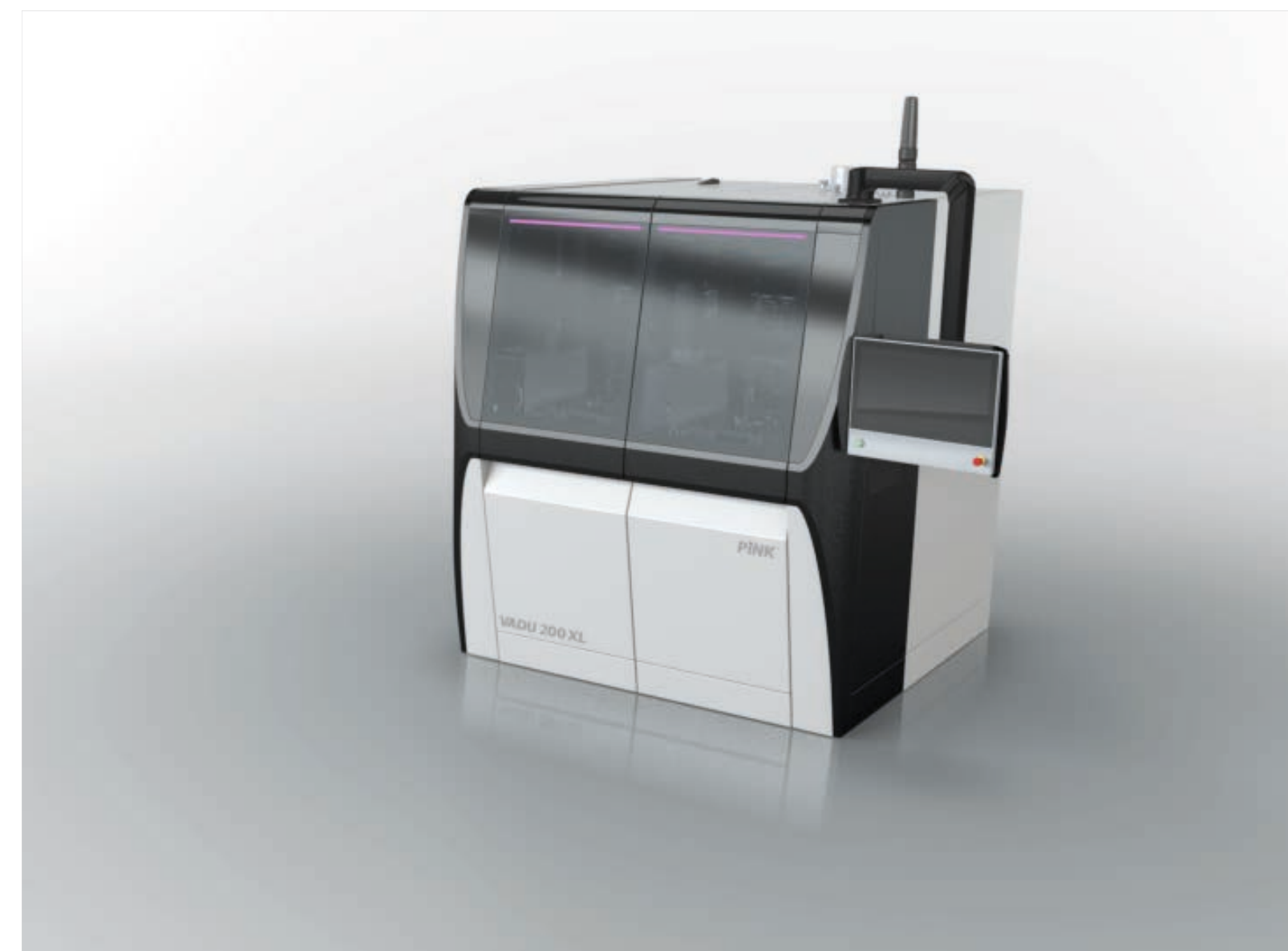
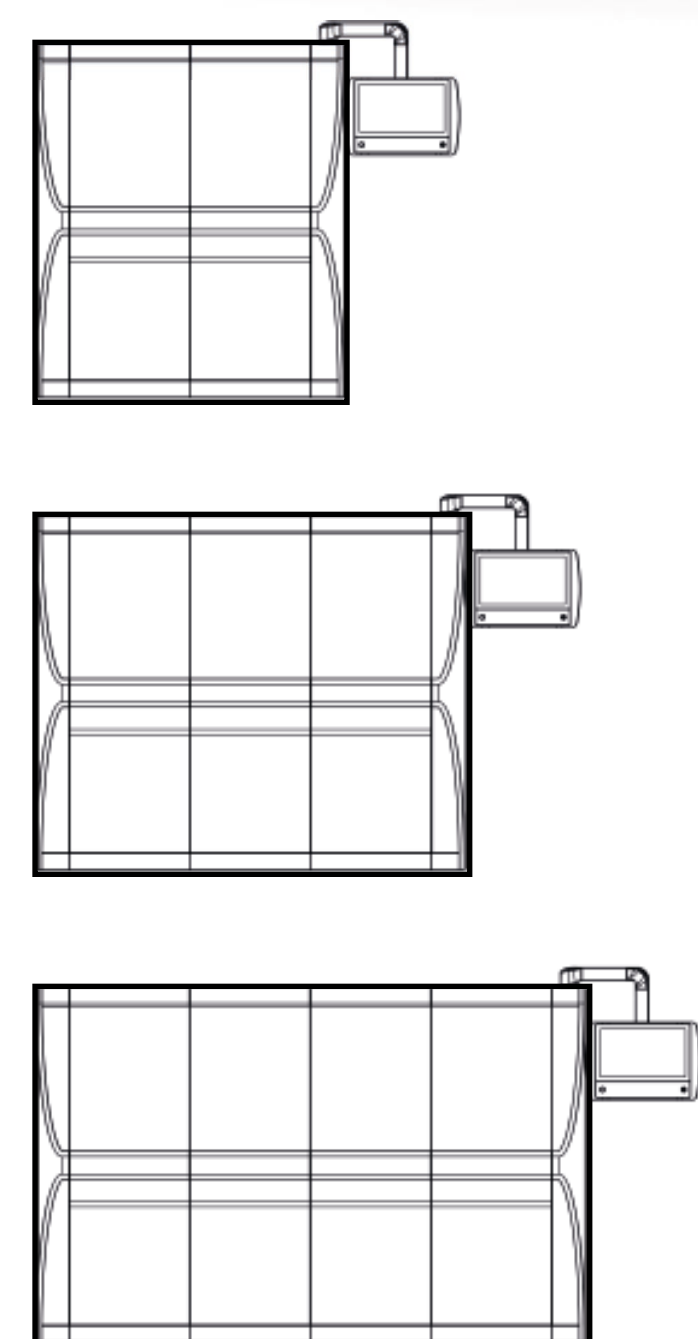
# VADU SERIES

## Vacuum Soldering Systems

INDUSTRIAL DESIGN







IDEA

## Modularly expandable and still seamless

- The design of the VADU Series machines is based on a modular concept, with the modules blending harmoniously and making it appear as one closed system.
- Individual machine components merge seamlessly, creating a coherent and harmonic overall design.
- The top cover handle has been integrated invisibly between the glass cover and the lower sheet metal housing.
- The fasteners for removing the front panels have been integrated and 'hidden' in the same way.



## Innovative lines

---

- The smooth transition from the dark grey side panel to the front panel is a special highlight.
- Elegant lines join all parts of the housing together.
- The futuristic design stands out from other electronic production systems, while maintaining a plain, modular and constructive plant design.
- Plastic corner elements manufactured using thermoforming have been integrated into a classic sheet metal cladding.

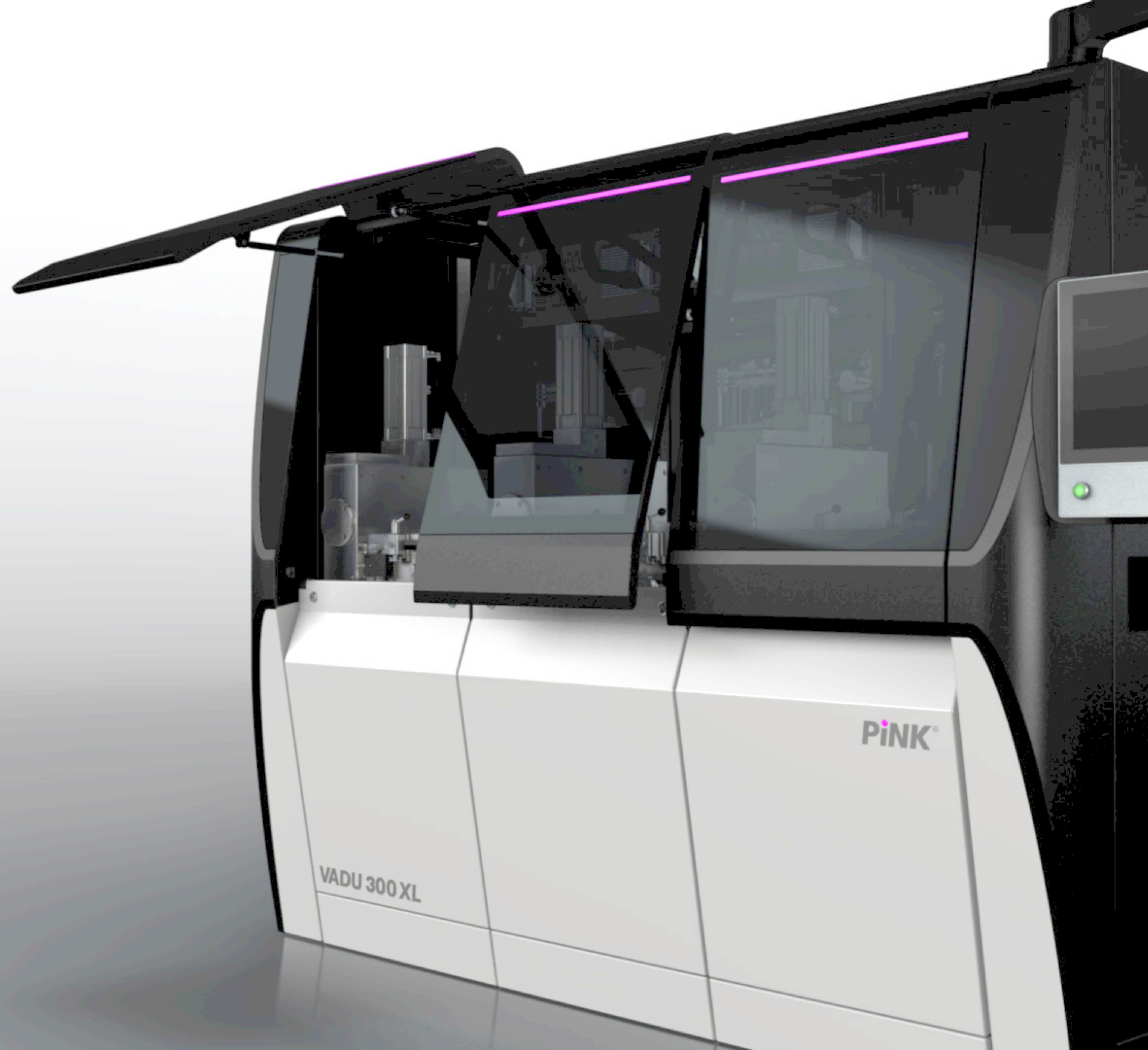




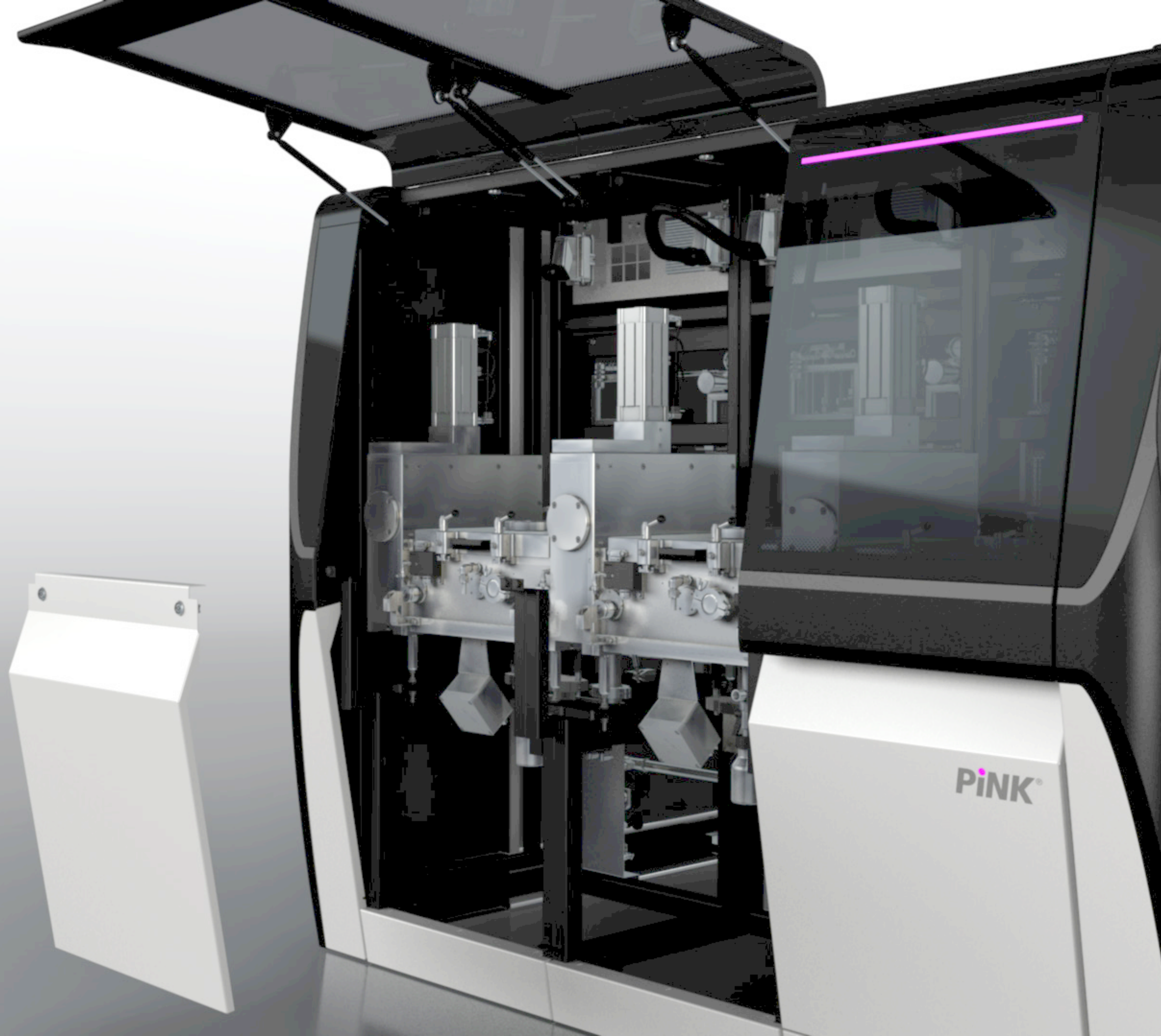
## Seamless operation

---

- The top cover handle has been integrated invisibly between the glass cover and the lower sheet metal housing, contributing to the smooth machine design and enabling an ergonomic grip with sufficient gripping volume and space.
- The top covers can be opened via ergonomically shaped handle strips in the doors.
- Another unique feature of the VADU systems is the large front glazing, which blends harmoniously into the overall design and offers the best possible view into the machines.







## FUNCTION

### Ergonomic design for users and servicing

---

- The systems have been adapted to the needs of their users to the greatest possible extent – both ergonomically and when it comes to usability.
- Service access to the systems is also particularly user-friendly and is possible via removable front panels.
- Panelling parts can be completely removed in just a few steps.



## Before/After

- The family-owned company PINK works in a very customer-oriented way, which was taken into account with the new system design.
- The modular design of the VADU systems enables the production of tailor-made and individual as well as scalable solutions for customers.
- The new VADU design line is the starting point for a new design language and a landmark for the PINK brand.

Previous design

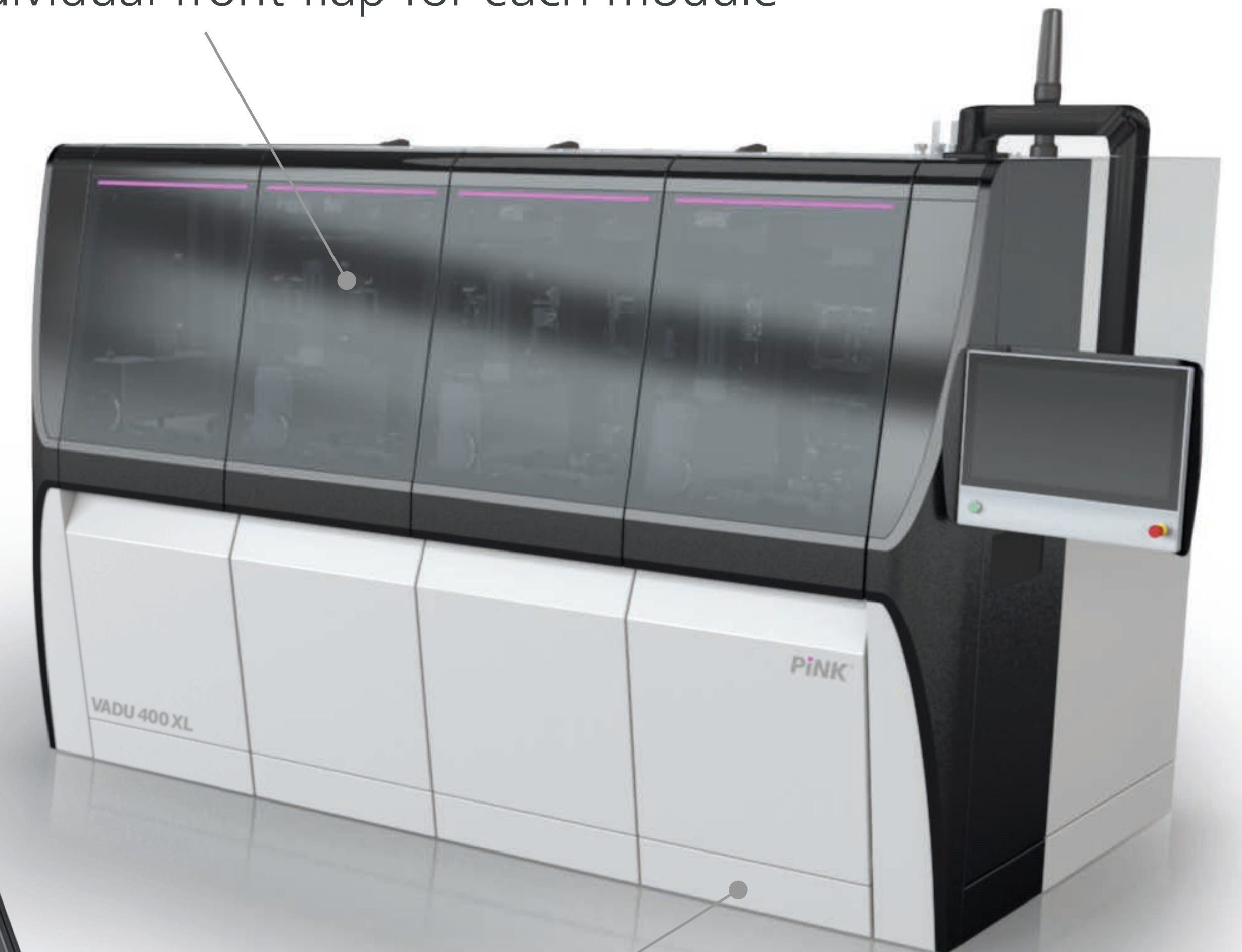


Continuous front flap

Continuous base frame

Individual front flap for each module

Individual base frame for each module





## DIFFERENTIATION

### Perfectly suited for individual solutions through modules

- The new VADU modular system can be expanded by one or two modules, creating 2-4 chambers and enabling a system upgrade from small series production to mass production.
- The systems always maintain their cost-efficiency as they consist of many identical parts.
- The unique design of the housing and the use of LED lighting pick up on the brand's colour scheme and reflect the company's future-oriented technology.
- Fully flexible as the fixed, continuous base frame has been replaced.

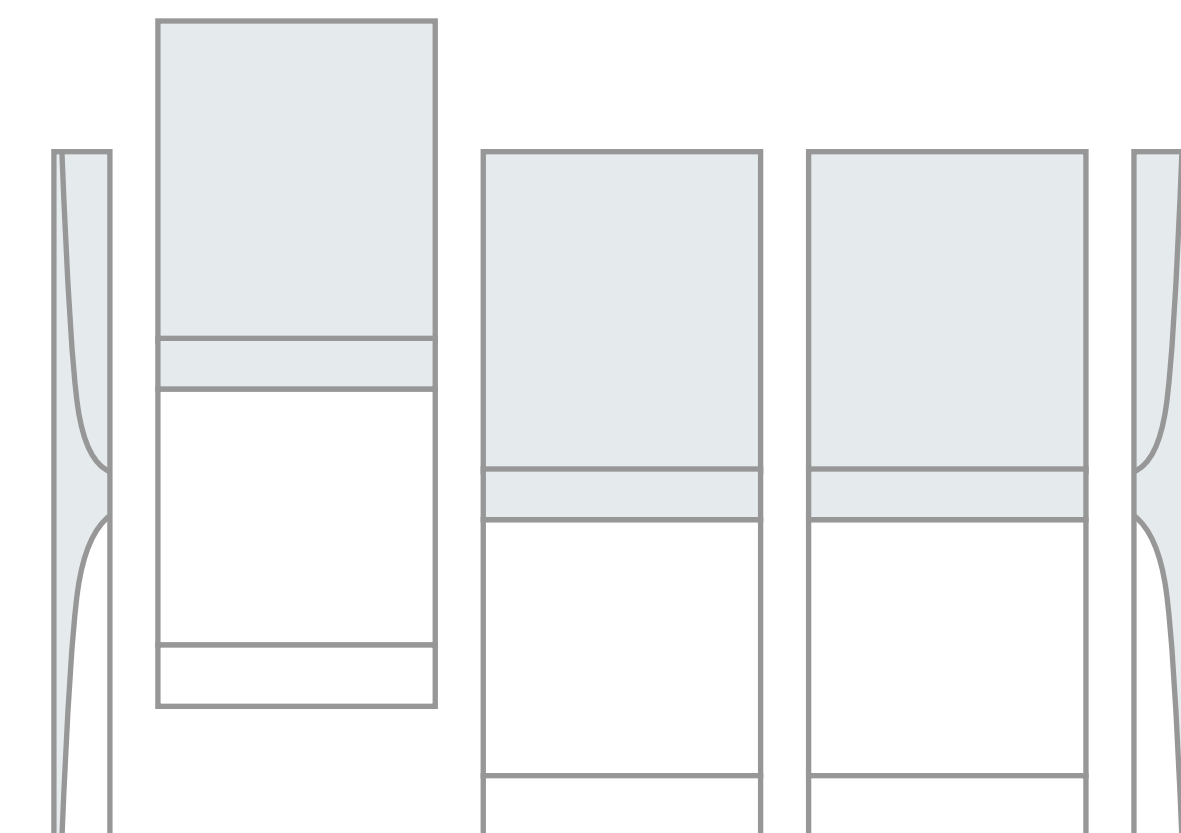


Current standard



Fixed and limited construction size

VADU modular concept



Freely scalable and expandable



## Intelligent and sustainable



- The design of the VADU systems generates high user satisfaction.
- Functional and technology modules can be extended or upgraded.
- The systems are very robust. They are durable, modular and consist of many identical parts, making them particularly resource-saving.
- Plastic is used sparingly (less than 4% of the complete housing surface) and all plastic parts are easily exchangeable.
- The UI design, closely coordinated with the industrial design, ensures a convincing holistic user experience.